

## Dear Parent/Carer,



May I take this opportunity to welcome your child's class on board our exciting walk to school initiative 'Walk on Wednesday' or Super WoW! The scheme is run in partnership with Kent County Council, Medway Council and leading walk-to-school charity the KM Charity Team. Super WoW! is now in its eleventh year as a county wide scheme and has seen walking to school figures increase from 48% to 79% on average at participating schools as well as an increase in walking to school on other days too. It's still proving a big hit with teachers, parents and pupils across Kent and Medway.

By taking part in Super WoW!, pupils get regular exercise and they will be more alert and ready to start the day. The scheme has already seen less traffic on the roads, reducing congestion around the school gates and children also learn vital road safety skills as they walk in. Not only will the environment improve, but Super WoW! will be a step on the way to the school achieving Healthy Schools enhancement and addressing School Travel Plan Targets.

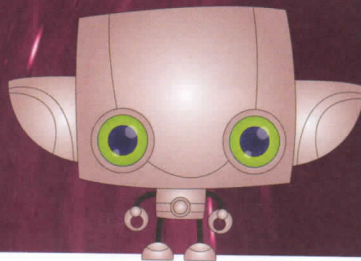
**Super WoW! is designed to run for one academic year from October to July.**

- Pupils are actively encouraged to use more greener and more active ways (scoot, cycle, walk, park & stride and use of mobility aids) to and from school each Wednesday or as often as possible.

- Pupils are given a tally card, which they keep in school and collect bronze, silver and gold stickers from their teacher or learning support assistant each day they use green transport to or from school.
- Pupils also take it in turns to become walk to school monitors. This involves collating the weekly figures in their class so they can be added to the [kmwalktoschool.co.uk](http://kmwalktoschool.co.uk) website and the School A1 Wall Chart.
- Super WoW! does not exclude families who live too far from school to be able to walk all the way. If your family has to drive to school, why not park further away than normal and walk at least the last five minutes to enable your child to take part and qualify for a sticker?
- There are also 3 certificates, one for each term to collect, awarded for special effort.

### Road Safety Skill Tests

During the year Wowzer will send home newsletters challenging families to walk or cycle to school with prizes for the classes that do the best. One of these will announce the details of Wowzer's Road Safety Skill Tests challenge which can earn children bronze, silver and gold awards.



Phil Gallagher, who plays the role of Mister Maker in the CBeebies TV programme, could visit our school if we are the top or most improved school for green travel. He will read a story to the Super WoW! special challenge winners this academic year!



Kent Messenger newspapers will be covering the progress of all schools taking part, so look out for pictures and stories about Super WoW! and our school. You can also visit [www.kmwalktoschool.co.uk](http://www.kmwalktoschool.co.uk) to obtain further information about the scheme, the KM Charity Team, how to get involved, latest news, downloads and forthcoming events.

I am looking forward to Super WoW! and hope that you will support it too.

Yours faithfully  
Headteacher

