



to Stingrays class

Teacher: Mr Roe

TA: Mrs Thomson





At Singlewell we believe our **CARES** values together with engaging teaching that inspires **curiosity** and is filled with **ambitious** challenge, builds **resilience** and creates a school where learning behaviour is excellent. Children are treated **equally** and develop good social skills which enable them to take responsibility for and regulate their own behaviour which keeps them **safe** around the school.

As stated in our behaviour policy, which can be found on our school website.



*We expect the children to:*

*Have a positive attitude and be engaged in their learning.*

*Have respect for themselves and others, and respect for their learning environment.*

*Be responsible for their own actions, learning and belongings.*

*Learn from their mistakes and take pride in their achievements.*

*Listen to others- be attentive, turn-taking in conversation and following instructions.*

*Adopt our core values and class routines.*

*In Year 5*

*Your child is in Key Stage 2*

*Differences in the curriculum include:*

*Swimming, Forest School, Assessment dates (October, February, June).*

*Breaktime/Lunchtime will be:*

*Break - 11:10 - 11:25*

*Lunch - 12:45 - 1:45*

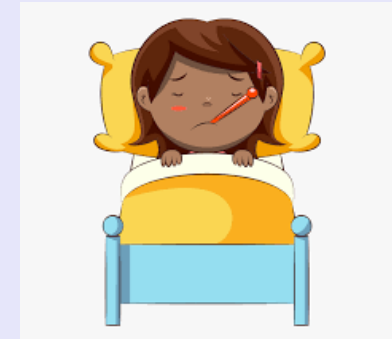
*(Key Stage 2 can bring a healthy fruit/ vegetable snack-  
no cereal bars or sugary biscuits)*



Attendance is essential to helping children reach their full potential. Absenteeism means children miss valuable learning experiences, have gaps in their curriculum knowledge and compromise crucial academic times such as SATS.

We must work together to impress the importance of attendance and punctuality. All pupils should have at least 96% attendance in a school year, which already makes allowances for the normal rate of ill health.

The school will NOT be able to authorise any holidays in term time. Permission for absence from school can only be granted in exceptional circumstances and this no longer includes holidays.

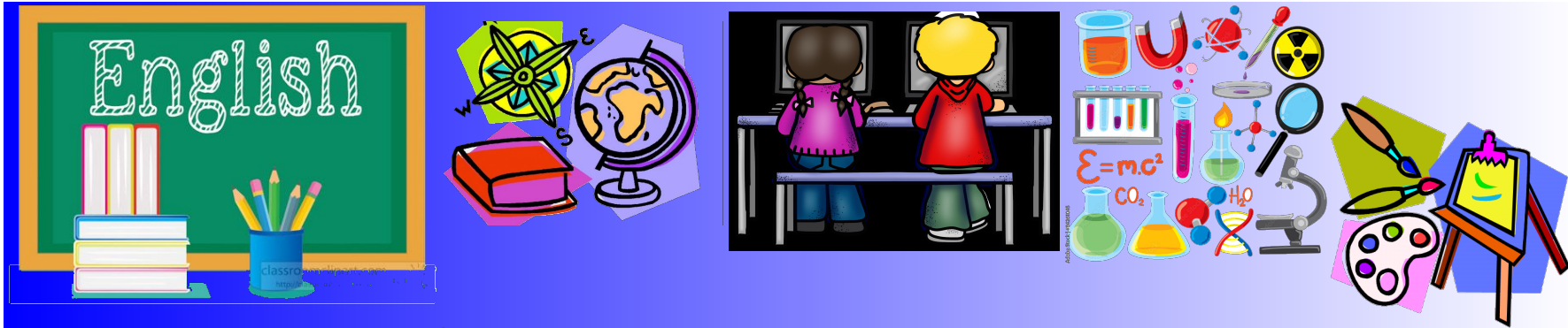




It is very normal for friends to fall out, it is also important for children to learn how to resolve conflict.



If there is an ongoing issue that is not getting resolved between children please know, as teachers, we are here to help. Please come to us and avoid any form of social media e.g. WhatsApp, Facebook etc.



## Programme of Study - term 1 and 2

Maths: Number and Place Value, Addition and Subtraction and Multiplication and Division.

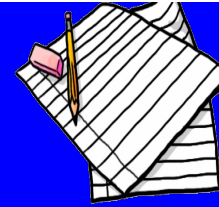
English: Greek Myths, Who Let the Gods out? This is not a fairytale.

Other: Space, Forces, Ancient Greece, North America, Geometric Art, Textiles, Recorder, Netball, Dance/Gym, Online Safety, Databases.





## Days to remember!



**Homework:** Children will be given homework appropriate to their needs and class topics. We ask parents to support with this and help make this a positive, valuable experience. This will alternate between Purple Mash and Red Books.

**Spellings:** Friday

**Reading books:** Daily

**PE day:** Thursday

**Forest School:** Term 3/4







Uniform creates a level playing field among students, reducing peer pressure and it enhances school pride, unity, and community spirit.

## Uniform

Red school jumper or cardigan  
(can be unbranded).

Grey trousers, skirt or pinafore  
dress.

Flat, black school shoes.

Red/ white/ black socks or tights.

Summer dresses or tailored shorts  
in warmer weather.

Red or white polo top/ white shirt.

Short nails.



No jewellery except for plain stud earrings.

No make up or nail varnish.

No hair down, hair must be tied up when  
at shoulder length or longer. Please use red,  
grey or black hairbands.

**Uniform MUST be  
named**

## PE KIT

1. PE kit is: all-black trainers, sports socks, drawstring sports shorts, plain black jogging bottoms (unbranded, no logos), white or red polo top and school sweatshirt/ cardigan (no hoodies).
2. No jewellery, including earrings, should be worn on those days.
3. Children may wear PE shorts on warmer days. These must be plain, black school sports shorts (not cycling shorts).
4. On colder days the children can wear black jogging bottoms (not leggings)



## Celebrations and Rewards!



Our class reward system is:

Class Dojos, House Points and Marbles.

Each week we give out a CARES certificate and badge to a member of the class who has demonstrated our value of the week. They can wear these badges with pride every day!



Each term we have a reading assembly to celebrate reading efforts outside of school. Please read with your child regularly to help them to earn raffle tickets. Raffle tickets are gathered over the term in a class jar. Prizes are awarded during the reading assembly to those children who are successfully plucked from the jar - the more raffle tickets, the more opportunity to win!

# House Points

Max  
Whitlock



Reece  
Dunn



Emily  
Campbell





Kye  
Whyte



Poppy  
Cleall

## Clubs and School Trips!

 *Term 6 Singlewell Clubs* 

**Clubs start week beginning Tuesday 6<sup>th</sup> June and can be booked via our Parent App**

| MONDAY  | TUESDAY  | WEDNESDAY  | THURSDAY  | FRIDAY   |
|---|--|--|---|--|
| <b>Year 5 (KO)</b><br><b>Debate Club</b><br><b>3.05pm-4.00pm</b><br>Pick up: Front Office<br>Dates: 12/6, 19/6, 26/6, 3/7, 10/7 | <b>Year 2 (LK)</b><br><b>Drawing Club</b><br><b>3.05pm-4.00pm</b><br>Pick up: Front Office<br>Dates: 6/6, 13/6, 20/6, 27/6, 4/7          | <b>Year 1,2 (MW &amp; TO)</b><br><b>Singing Club</b><br><b>3.05pm-4.00pm</b><br>Pick up: Front Office<br>Dates: 7/6, 14/6, 21/6, 28/6, 5/7 | <b>Year 4 (GR)</b><br><b>Rounders Club</b><br><b>3.05pm-4.00pm</b><br>Pick up: Front Office<br>Dates: 8/6, 15/6, 22/6, 29/6, 6/7                  | <b>Year R</b><br><b>Dance Club</b><br><b>3.05pm-4.00pm</b><br>Pick up: Front Office<br>Dates: 9/6, 16/6, 23/6, 30/6, 7/7 |
| <b>Year 1 (PA)</b><br><b>Phonics Club</b><br><b>3.05pm-4pm</b><br>Pick up: Front Office<br>Dates: 12/6, 19/6, 26/6, 3/7, 10/7   | <b>Year 3 (HK)</b><br><b>Dolphins Netball Club</b><br><b>3.05pm-4.00pm</b><br>Pick up: Front Office<br>Dates: 6/6, 13/6, 20/6, 27/6, 4/7 |  | <b>Year 6 (AH)</b><br><b>Film Club</b><br><b>3.05pm-4.00pm</b><br>Pick up: Front Office<br>Dates: 8/6, 15/6, 22/6, 29/6, 6/7                      |  |
|   |  |  | <b>Year 3 (LM)</b><br><b>Turtles Netball Club</b><br><b>3.05pm-4.00pm</b><br>Pick up: Year R Jellyfish Class<br>Dates: 8/6, 15/6, 22/6, 29/6, 6/7 |  |

DEAR PARENTS/ CARERS,  
PLEASE ENSURE YOUR CHILD EXPRESSES AN INTEREST IN THE TIMETABLED CLUB OFFER FOR TERM 5 BEFORE YOU SIGN THEM UP.

Always refer to our school website to see what clubs are on offer!

<https://www.singlewellps.co.uk/>

**\*Please make sure you have our school app downloaded and working as this is where important messages and all communication is sent, including permission slips for clubs.**

Every class will go on at least one school trip, our school trip will be Kent Life (Vikings)  
Paying for school trips will be via Scopay.



Any questions?

